



TABLE OF CONTENT

WELCOME MESSAGE FROM 6APCPH CHAIR	2
WELCOEM MESSAGE FROM 1 ST DHML	3
KEY NOTES ABSTRACTS	4
CONFERENCE VENUE	15
SCIENTIFIC PROGRAM	17
ORAL PRESENTATION PROGRAM	20
POSTER PRESENTATION PROGRAM	39
NATIONAL CONFERENCE PROGRAM	45



WELCOME MESSAGE



On behalf of the organizing committee, I am honored and delighted to welcome you to Asia-Pacific Conference on Public Health (APCPH) and 1st ASEAN Health Promotion Conference which brings together experts and academics from the Asia-Pacific region. The conference will take place from August 23 – 26, 2015 at Asia Hotel Bangkok, situated in the heart of Bangkok, THAILAND.

As the conference chair of 6th APCPH and 1st ASEAN Health Promotion Conference, I know that the success of the conference depends ultimately on the many people who have worked with us in planning and organizing both the technical program and supporting social arrangements. In particular, we thank the Program Chairs for their wise advice and brilliant suggestions on organizing the technical program; the Program Committee for their thorough and timely reviewing of the papers, and our sponsors who have helped us to keep down the costs of 6th APCPH for all participants. Recognition should go to the Local Organizing Committee members who have all worked extremely hard for the details of important aspects of the conference programs and social activities.

Prof. Dr. Supa Pengpid, M.Sc., Dr.PH. (Public Health), MBA
Director of ASEAN Institute for Health Development
Mahidol University, Thailand
6th APCPH & 1st AHP Chair

WELCOME MESSAGE



On behalf of the organizing committee, I would like to welcome you all to the first national conference of District Health Management Learning which is held from 24-25 August 2016 at ASIA Hotel, Ratchathewi, Bangkok. Please let me to express my sincere gratitude and I feel honored that you give us a kind contribution in every periods of the conference.

This conference has been collaborated among several organizations such as National Health Security Office, ASEAN Institute for Health Development, Mahidol University, and Praboromarajchanok Institute for Health Workforce Development, Ministry of Public Health, Thailand.

ASEAN Institute for Health Development have played vital role in Strengthening Health and Allied health Professionals and Community in the Project called “District health management learning or DHML” since 2014. The main objectives is (a) to strengthening principles and develop the learning approach in order to improve efficiency of District Health Management which is complex and adaptive system. (2) to promote interactions among administrative levels, operational levels and other stakeholders such as community civic groups towards this learning approach. (3) to develop networking systematically particularly District Health System (DHS). This approach is based on Context-based Learning (CBL) and special learning approach called transformative learning. The 21st century education is highlighting and promote learning as collective manners (learning team) which is consisted of administrators, operational practitioners, public health professionals and community. Those who participate in the project will gain their management skills and initiate their networking. Learning and growth of management skills of the learning teams are demonstrated as better relationships and utmost that create humanistic management using appreciation, sharing, connection and support.

ASEAN Institute for Health Development, Mahidol University as a part of the Learning Coordinating Centre: LCC among 110 LCCs in 2016 held this national conference which composed many activities such as lecture, panel discussion, oral and poster presentation, and several workshops for soft skills training such as “LISTEN MORE THAN LISTEN”, “EXPLOSION: INSIDE OUT” for examples. Best Practice Models will be shared via Oral and poster presentations.

I would like to take this opportunity to express my sincere thanks to the all staffs, scientific committee and in particular our honourable speakers. We truly appreciate your dedication. However, this conference could not have been made possible without the collaboration of all participants and presenters. I hope that everyone would take the results of this conference to enhance works and develop the sustainable health system. I am wishing you the wonderful days with productive panels and many meaningful encounters. I warmly welcome you again.

Dr. Aroonsri Mongkongchati

1st DHML Chair



KEY NOTES: ABSTRACTS

Retrospect and Prospect of Infectious Disease Surveillance in China

Weizhong Yang,

Chinese Preventive Medicine Association, Beijing, China

I. Historical Retrospect of Infectious Disease Surveillance in China

1. Regulations of infectious disease surveillance and management
2. Administrative and technical agencies for implementing of infectious disease surveillance and management
3. History of infectious disease surveillance over the past 60 years
 - 3.1 National Notifiable Infectious Diseases Surveillance System
 - 3.2 Public Health Emergency Event Surveillance System

After the SARS response, China had implemented the National Guidelines for Reporting and Management of Public Health Emergency Events Related Information (Trial), public health emergency events achieved internet-based reporting, basing on the same information platform with the infectious disease surveillance system, being two different subsystems belonging to China Information System for Disease Control and Prevention.

3.3 Surveillance systems for special diseases

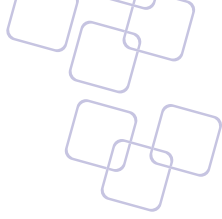
China has significantly strengthened infectious disease surveillance after 2003. Specifically, China CDC, coordinating with all 31 provinces/municipalities/autonomous regions, rehabilitated and set up over 1,700 comprehensive surveillance sites of infectious disease, prioritized surveillance for 27 infectious diseases on etiology, serology, influencing factors and behavior risk factors, contributing to an overall situation in China relying on reporting of notifiable infectious diseases and being supplementary by special infectious diseases surveillance.

3.4 China Infectious Diseases Automated-alert and Response System

3.5 Other surveillance approaches

II. New Challenges in Infectious Disease Surveillance

1. The contents of surveillance need to be more diversification.
2. The existing surveillance system has an inadequate coverage; and the methods of surveillance and reporting do not meet the needs of being sensitive and timely.
3. The quality of surveillance data is not satisfactory; laboratory evidences are inadequate; and the laboratory network for infectious disease surveillance and diagnosis is not perfect.
4. The analysis technology and capacity of infectious disease surveillance data is insufficient; surveillance data are neither fully utilized nor deeply explored; and epidemic evaluation and early warning are to be further refined.



III. Prospect

First of all, enhancing the overarching design of infectious disease surveillance system, making a national strategic plan for infectious disease surveillance, an guiding the innovation and sustainable development of the infectious disease surveillance system in China. Secondly, systematic summarizing existing problems in the implementation of laws and regulations of infectious diseases over the past years, improving the mechanisms and technical protocols for identification and classification of notifiable infectious diseases, adjusting the species of notifiable infectious diseases. Thirdly, perfecting the infectious disease surveillance network and enhancing the development of infectious diseases laboratory system. Fourth, by applying new theories and technology, such as biotechnology information technology, cloud computing technology and geospatial information technology, innovating infectious disease surveillance, analysis, evaluation and early warning technologies. Fifth, new data mining and analysis technologies, have been used to analyze surveillance data accumulated over the past 60 years in China in a systematic and in-depth way, so as to provide abundant scientific evidence for decision-making in the prevention and control of infectious diseases.



KEY NOTES: ABSTRACTS

Alliances for health and sustainable development

Bettina Borisch

Institute of Global Health, Université de Genève, Switzerland

Recent and previous declarations and resolutions for health and sustainable environment have underlined the importance of alliances. These alliances may have taken the form of temporary groupings or long standing networks. By definition, environmental health policies have to be intersectoral. For example, all European countries insist on the necessity to develop environmental health policies. There are however, several obstacles to the development of more ambitious environmental health policies. There exist national environmental health action plans (NEHAPs) and national strategies of sustainable development (NSSDs), but results obtained are particularly limited. At the international level policies and alliances for promoting environmental health are particularly needed but are difficult to obtain. In the 17 sustainable development goals (SDGs) agreed upon in September 2015 in New York, health and environment are intimately linked. The classic determinants of health such as poverty (Goal 1), food (Goal 2) or water (Goal 6) feature prominently. The concept of planetary health is also included, for example, in goals 13-15, on climate and ecosystems. If all the now almost 170 targets will have to be achieved, everybody will have to play a role.

Proposals of how these collaborations and alliances could possibly work will be presented. One comes from the World Federation of Public Health Associations (WFPHA). The WFPHA in collaboration with the WHO has asked how the global public health community should position itself to influence all of the key actors across the entire spectrum of public health issues, be it in government, civil society or industry. The result is the Global Charter for the Public's Health. The Charter provides a flexible framework that can be applied globally and within individual countries. It identifies the enabling functions of "Governance, Advocacy, Capacity and Information". The role of the Charter is to ensure a comprehensive approach to tackle the threats to health. These comprehensive approaches need alliances that even maybe unthought-of.



KEY NOTES: ABSTRACTS

Endocrine disruption by chemicals- Challenges in linking chemical exposure to health effects

Kyungho Choi

School of Public Health, Seoul National University, Seoul, Korea

Can we imagine our world without chemicals? We are living in a society with ever growing dependence on chemicals for almost every aspect of our lives. Chemicals developed for specific benefits have side effects as well. In modern societies, people are exposed to a myriad of chemicals at often very low doses for long time. Assessing exposure among people is a great challenge, and linking it to adverse health consequences is even greater challenge. In this talk, I would like to list several challenges we are facing in tackling endocrine disrupting chemicals (EDCs) and managing their health effects, based on my personal observations. Then, I would like to discuss possible approaches to address such challenges.

EDCs are chemicals that can interfere with normal endocrine function and cause adverse effects on individuals, their progenies, or even populations. EDCs are diverse in physicochemical properties. The timing of the exposure is an important determinant of the effects. In addition, often dose response relationships are non-linear. Therefore, it is difficult to identify responsible EDCs for given adverse health effects. Epidemiological studies on EDCs have played significant roles in identifying responsible chemicals and guiding subsequent public health investigations. However, there are several limitations. (1) Human evidences of endocrine disruption at environmentally relevant levels of exposure are still sparse. (2) Multiple chemical exposure is often ignored in association studies, even when there are common sources of exposure. (3) Substituting chemicals are often used without appropriate safety screening.

Based on my observations, several areas that warrant active researches and innovative breakthrough were identified. Advance in analytical techniques coupled with big data analysis will help address such challenges, improve chemical management, and eventually protect public health.



KEY NOTES: ABSTRACTS

Innovative financing for health promotion: Thailand experience

Prakit Vathesatogkit

Action on Smoking and Health Foundation, Thailand

Thailand has started tobacco control program in the early 1990s by passing the comprehensive tobacco control legislation both on tobacco product control and smoke free public places, as well as increasing tobacco tax to reduce tobacco consumption. The problem faced then was that the request for budget to support other tobacco control activities were not successful. At that same period, there were other major public health problems such as alcohol related problems and traffic accidents which are facing the same problem of lack of funding to support prevention and control. Another development was Ministry of Health studying the universal health care in Thailand. Therefore, the idea of creating a health promotion fund to support tobacco, alcohol control and other health promotion activities was proposed. It was argued that this initiative will complement the universal health insurance policy since effective health promotion will help lessen the burden on budget for universal health coverage. In 2001, Thailand Health Promotion Fund Act was enacted by the parliament. This act authorized the government to set up a health promotion agency funded by 2% extra taxes levy on tobacco and alcohol product. The mission of this health promotion agency (ThaiHealth) is to fund tobacco and alcohol control as well as other health promotion activities. ThaiHealth work with both government and many other non-health sectors to promote health by the using the concept of the Ottawa Charter action for health promotion. ThaiHealth major strategy consists of three components: knowledge generation for evidence based health and policy adcocacy, community participation and social mobilization to advocate and support healthy public policy. The first decade of ThaiHealth generation results in significant reduction in tobacco and alcohol consumption as well as traffic accident reduction. Many countries are now studying and adopting the ThaiHealth model of innovative financing.

We strongly believe that, without adequate & sustainable funding for health promotion, the SCGs Goal of reduction of premature death from NCDs by 1/3 in 2013 is not possible



KEY NOTES: ABSTRACTS


Diabetes prevention-Global perspective

Peter Schwarz

Department of Prevention and Care of Diabetes, Technical University of Dresden, Germany

Over the last decades we have observed an increase of prevalence of diabetes in many countries along with significant differences in prevalence trends between countries worldwide. In Europe and other Western countries, the prevalence rate reaches a plateau or has slowed down on the level of around 8-10%. In Asia, a continuous rise in prevalence has been monitored, similar to that in Africa, and an explosion of diabetes prevalence can be observed in the Arabic Region. What we can do is to observe individual lifestyle and environment as determinants for the development or prevention of diabetes and the respective risk factors including genetic susceptibility. The interplay between these determinants influencing the probability of the individual to stay healthy or how a person learns or chooses a healthy lifestyle, will define success in diabetes prevention. Innovative actions are needed to slow down the progression of type 2 diabetes. We have to develop and implement innovative policy and environmental strategic activities designed to enable sustainable diabetes prevention with scalability on national level.

People with diabetes or pre-diabetes need support and self-management skills to control their disease and to promote healthy lifestyles. The education and counseling based strategies to support individuals need to be extended: to be able to control diabetes epidemic and promote healthy lifestyles in the public, novel ground-breaking – disruptive - action on environmental level is required. New policies including a liability for adverse health effects of food and beverage products are needed. Modern health policies must take into account the short-, mid- and long-term health effects of food and beverage products. Developing labeling strategies of food products will highlight healthy food products in a toxic food environment and help consumers to informed decision-making, especially those with lower health literacy. Developing strategies to incentivize a healthy lifestyle by health tokens may booster and scale up the implementation of healthy lifestyle strategies by also increasing the liquidity in the “healthy” health care sector. A tax exemption for prevention services will speed up the development of sustainable individual prevention strategies. These policy components can give the frame in which business models can be developed to strategically orient on sustainable healthy lifestyle and prevention products. Allowing entrepreneurs the power and safety to invest in healthy prevention businesses can increasingly lead to sustainable individual health outcomes on the population.



Researchers have answered enough questions for the individual prevention of type 2 diabetes. Individual support will continue to be the basic element of diabetes prevention but we need to include environmental and policy level in the prevention strategies to reach population level effects. In the future, evaluation of real life approaches and of implementation of national diabetes strategies can bring more information regarding prevention on the population level. But it is also important to use the scientific evidence further in the evaluation and quality management of prevention business. We argue that improvement of diabetes prevalence on a public health level can only be achieved by a policy shift from individual to shared responsibility. Moreover, health should be seen as a value in business and society. We, as researchers, have to pass the baton to governments, entrepreneurs, policy-makers and tax lawyers. The foundation of raising awareness for the prevention of diabetes is been set to world, but the baby “prevention” is at puberty now. Implementation, scalability and sustainable business must become a shared, transforming action including business and policy partners to finally halt the rising prevalence of type 2 diabetes.



KEY NOTES: ABSTRACTS

Health Promotion in the Context of Unsustainable Health Systems and Health Disparities: Innovative Initiatives in Toronto

Howard Hu¹, Alejandro Jadad², S. Rani Kotha², Adalsteinn Brown³

¹Dalla Lana School of Public Health, University of Toronto, Canada

²Institute for Global Health Equity & Innovation, University of Toronto, Canada

³Institute for Health Policy, Management & Evaluation, University of Toronto

Canada, a G8 country, is ranked among the top 10 countries globally for per capita income, index of Human Development, and measurements of government transparency, civil liberties, quality of life, economic freedom, and education. It also has had a single-payor health system providing universal health coverage for over 25 years, which is consistently rated by Canadians as among the highest attributes of their country of which they are proud. Yet, as demonstrated in the 2014 Commonwealth Fund report comparing 11 nations by health care quality, access, efficiency and equity, Canada ranked near the bottom, only ahead of the United States. Moreover, Canada is suffering from growing unsustainability in terms of an aging population with multi-morbidity and inexorably rising health care costs; and it is no exception to the problem of health disparities, with the abysmal state of the health of its indigenous populations increasingly recognized as a national disgrace. In this context, we will describe innovative initiatives relevant to health promotion and associated examples that have been launched by the Dalla Lana School of Public Health (DLSPH) at the University of Toronto and its Institute for Global Health Equity & Innovation (IGHEI) and Institute for Health Policy, Management & Evaluation (IHPME) following IGHEI's Global Health Summit in 2014. Among them are an (1) overarching initiative to re-define what is meant by "good health" to expand and shift the emphasis towards embracing the capacity of an individual or community to adapt and self manage in the face of physical, mental and social challenges; as well as a re-conceptualization of what is meant and how to approach a "good death"; (2) the pursuit of health promotion through innovations in community-based social entrepreneurship, such as the Institute's recent "hacking food" event that created an initiative aimed at reducing child hunger in the greater Toronto area; (3) an initiative to capitalize on the extraordinary availability of health data on almost every single individual in Canada (through record linkage based on its single-payor system) to add social and environmental data and create an innovative version of "Big Data for Health" that embraces true population health, prevention and health promotion values; (4) the creation of new Centres for Health in All Policies and Health Economics that can evaluate the impact on health and health costs of new initiatives aimed at promoting health at all levels of policy; and (5) the creation of the Waakabiness-Bryce Institute for Indigenous Health, which has the



opportunity to build off of each of the previously-mentioned initiatives, as well as others, to make progress in improving health in communities that suffer the worst health disparities in Canada. Finally, the DLSPH and its IGHEI and IHPME is working to building partnerships with global health institutions such as the Thai Health Promotion Foundation, the ASEAN Institute, and Mahidol University to share and collaborate on such initiatives and other new approaches to advance a globally-informed agenda of health promotion



KEY NOTES: ABSTRACTS

Practicing Health Promotion Strategies in Low Resource Countries may be different from practicing in High Resource Countries: a Case Study of Thailand


Bundit Sornpaisarn¹, Chuthaporn Kaewmungkun²

¹Section of Major Risk Factors Control, ThaiHealth Promotion Foundation

²Social Research and Development Foundation, Thailand

Non-communicable diseases (NCDs) burdens have been gained attention worldwide. A concept of Health Promotion, Prevention and Protection is a key strategy to prevent and control burdens of NCDs. World Health Organization (WHO) has launched a series of health promotion ideas and strategies which include the Declaration of Alma-Ata (1978), the Ottawa Charter for Health Promotion (1986), the Bangkok Charter for Health Promotion in a Globalized World (2005), and lastly the Helsinki Statement on Health in All Policies (2013). All these recommendations addressed on urging countries around the world especially low- and middle-income countries to promote health of the population and to tackle the rise of NCDs. However, because successful health promotion theories and practices, which were foundations of these recommendations, have been mostly from high-income countries, how to successfully implement the suggested health promotion strategies in low- and middle-income countries may not be straightforward as implemented in high-income countries.

Learning from Thai experiences, we found that there are five abilities that need to be created and utilized in order the low resource countries to implement the suggested health promotion strategies successfully. The first ability is the ability to execute the standard Ottawa Charter for Health Promotion Strategies which include building healthy public policies, creating supportive environment, strengthening community actions, developing personal skills, and reorienting health service. The power of the Ottawa Charter has already been clearly demonstrated in literature. The second ability is the ability to mobilize the academic sector and the civic sector to complement the governmental sector in implementing the health promotion strategies. This ability is important especially in countries that their governments have difficulties in enacting healthy public policies under pressure of powerful businesses. The academic sector could help formulate the options of the healthy public policies and their rationale while the civic sector could help affirm the righteousness of the government's decision in favor of the society. The third ability is the ability to advocate healthy public policies through media. Media, public and social, is the most powerful communication tool that can carry the target message to the entire population or at least the majority of the population. The health promotion advocates who could employ the media



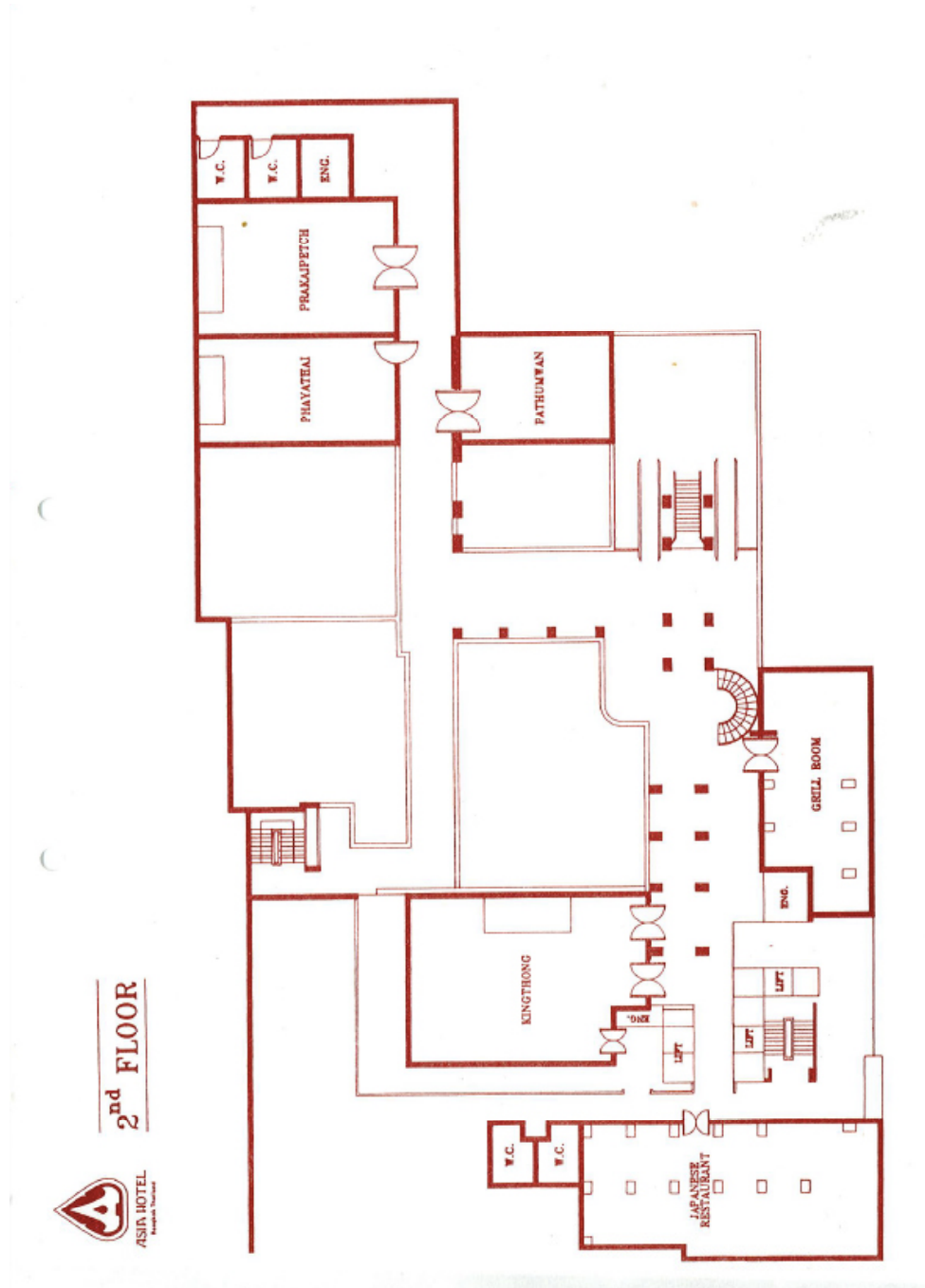
advocacy strategy can increase their probability of success. The fourth ability is the ability to secure finance for health promotion activities. The Thai government and parliament had enacted the Health Promotion Act in 2001. This Act earmarks 2% of the excise taxes of alcohol and tobacco products for the purpose of health promotion for Thai population. It also establishes ThaiHealth Promotion Foundation as a semi-autonomous governmental organization to utilize this earmarked budget to support all sectors in Thailand in advocating healthy public policies and executing health promotion activities. The last ability is the ability to create personnel who have a long-term commitment on advocacy for health promotion. Fortunately, Thailand has this kind of persons from time to time and they could collectively execute the above four abilities. My presentation will elaborate the above concepts in details.

Conference Venue

The Asia Hotel Bangkok

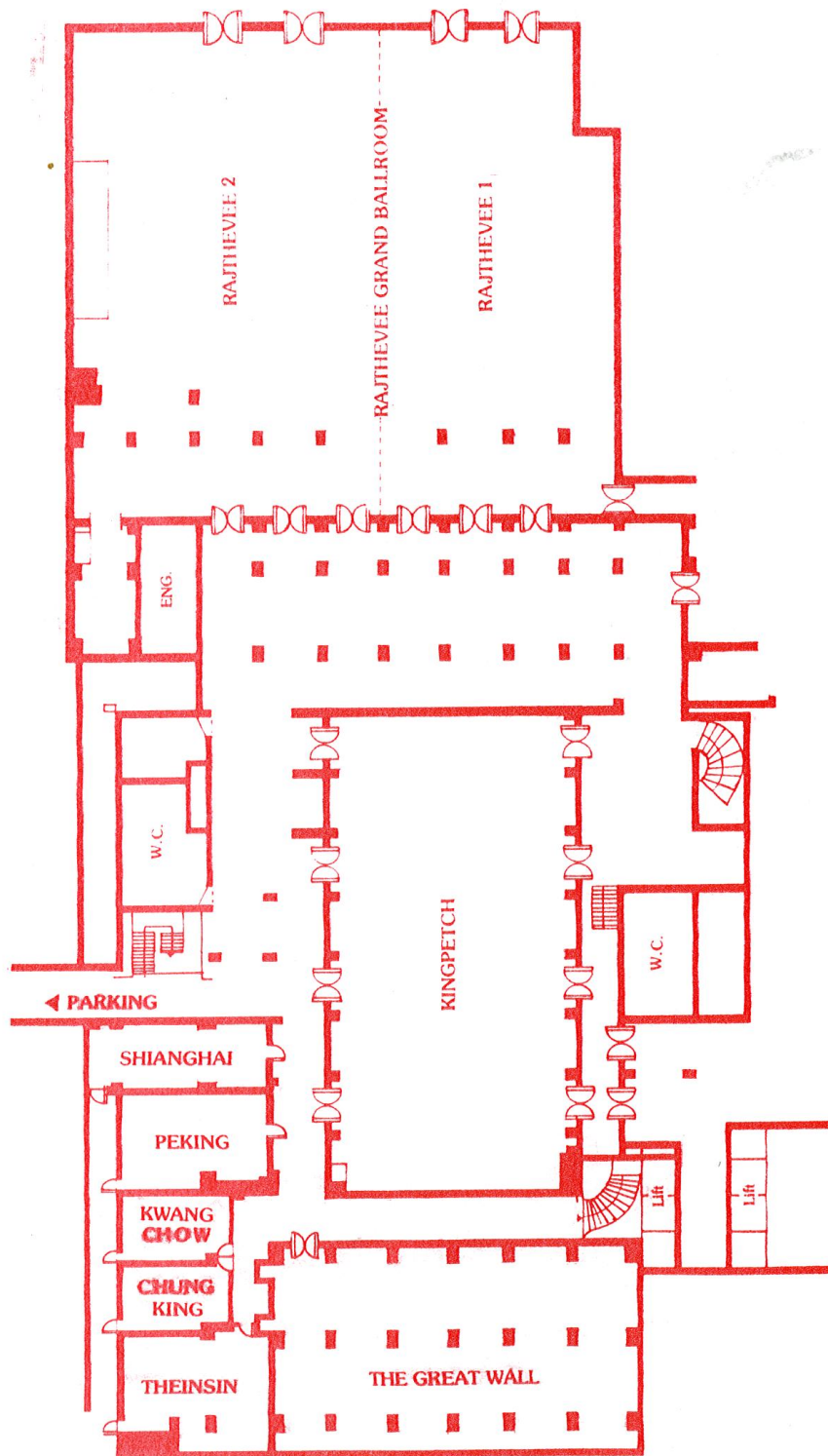
Address: 296 Phayathai Rd, Ratchathewi, Bangkok 10400

Phone: 02 217 0808





ASIA HOTEL 3rd FLOOR





6th Asia–Pacific Conference on Public Health (APCPH) 1st ASEAN Health Promotion Conference

23 August 2016

- 17.00 Registration
- 17:00-18:00 Health Promotion expert network platform :
Sign MOU (Dalla Lana School of Public Health, University of Toronto, Canada. /
AIHD/ Thai Health Promotion Foundation)
Venue: Shianghai
- 18:00-20:00 Welcome Reception
Venue: Kingpetch, 3rd Floor

24 August 2016

Opening ceremony & Keynote Speech Venue: Ratchatevee Grand Ballroom, 3rd Floor

- 08.00 – 09.00 Registration
- 09.00 - 09.30 **Opening ceremony**
Welcoming remarks:
Prof.Dr. Supa Pengpid,
Director of ASEAN Institute for Health Development / 6th APCPH & 1st AHP Chair
Dr. Aroonsri Mongkongchati,
ASEAN Institute for Health Development, 1st DHML Chair
Opening Remarks:
Prof. Bettina Borisch,
Director of the World Federation of Public Health Associations (WFPHA),
Headquartered in Geneva
Dr. Thawat Suntrajarn,
Vice Minister of Public Health & President
The National Health Association of Thailand
- 09.30-10.00 **Keynote Speech I: Sustainable Development Goals and Public Health**
By Dr. Daniel Kertesz, WHO Representative to Thailand
- 10.00-10.30 **Keynote Speech II: Alliances for Health and Sustainable Development**
by Prof. Bettina Borisch
Director of the World Federation of Public Health Associations (WFPHA)
- 10.30-10.45 Refreshment



Plenary session 1-3 Venue: Kingpetch, 3rd Floor

- 10.45-11.15 **Public health and disease surveillance**
by Dr. Li Li
Director of the World Federation of Public Health Associations (WFPHA)
- 11.15-11.45 **Determinants of diseases and epidemics: chemical exposure and health among population**
by Prof. Kyungho Choi
School of Public Health, Seoul National University
- 11.45-12.15 **Primary health care and sustainable development: Innovative Financing for Health Promotion: Thailand's Experiences**
by Prof. Prakrit Vathesatogkit
Executive Secretary, The Action on Smoking and Health Foundation THAILAND
- 12.15-13.30 Lunch and Poster viewing
- 13.30-16.50 **Oral Presentation**
Room 1 Pathumwan, 2nd Floor
Chair/Co: Asst.Prof.Dr.Shafi U. Bhuiyan / Dr.Seo Ah Hong
Room 2 Phayathai, 2nd Floor
Chair/Co: Assoc. Prof. Dr. Prathurng Hongsrangon / Dr. Montakarn Chuemchit
Room 3 Theinsin, 3rd Floor
Chair/Co: Assoc. Prof. Dr. Jiraporn Chompikul / Asst.Prof.Dr. Preeyaporn Koedrith
Room 4 Peking, 3rd Floor
Chair/Co: Asst. Prof. Dr. Khemika Yamarat / Dr. Khine Sandar Aye
- 13.30-15.00 **Global Health Security Agenda**
by Dr. Apichai Mongkol,MD,
Director General, Department of Medical Science/ MOPH)
Tumdee Drug Alert
by Mr. Worawit Kittiwongsunthorn,
Assist. Director General, Department of Medical Science/MOPH
Venue: Kingpetch
- 13.30-15.30 Workshop WFPHA (Regional member meeting)
Chair: Prof.Dr. Supa Pengpid
Director of ASEAN Institute for Health Development
Venue: Shianghai
- 18:00-20:00 Cultural Events (Conference dinner)

25 August 2016

- 9.00-12.25 **Oral Presentation**
Room 1 Pikulthong, 2nd Floor
Chair/Co: Assoc. Prof. Dr. Jiraporn Chompikul / Dr.Hussain Racheed
Room 2 Phayathai, 2nd Floor
Chair/Co: Asst.Prof.Dr.Shafi U. Bhuiyan / Dr.Seo Ah Hong
Room 3 Theinsin, 3rd Floor
Chair/Co: Prof.Karl Peltzer / Dr. Nutta Taneepanichskul
Room 4 Peking, 3rd Floor
Chair/Co: Dr.Khine Sabai Latt / Dr. YaPa Mudiyansele Chaminda Namal
Bandara Jayatilaka
- 9.00-10.30 **Risk Factors for Gallstone Disease in a Thai Population**
by Prof.Sukij Panpimanmas, MD.
Public Health Challenged and Prevention in the USA
by Dr.Ryan A. Loyd, MD.
Venue: Kingpetch
- 10.30-12.00 **Anubarn Wat Khlong Yai School: Health Promoting School**
By Department of Health/MOPH
Venue: Kingpetch
HPH Experiences in Thailand : Health Promoting Hospital
By Department of Health/MOPH
Venue: Pathumwan
- 12.00-13.00 Lunch
- Plenary session 4-7 Venue: Kingpetch, 3rd Floor**
- 13.00-13.30 **Innovations for aging at home: Fall prevention**
by Mr. Karn Nitayasuthi
Product & Technology Planner SCG Elder Care Solution
- 13.30-14.00 **Health promotion, prevention and health protection-global**
by Prof Howard Hu
Dean of the Dalla Lana School of Public Health CANADA
- 14.00-14.30 **Health promotion, prevention and health protection-Thailand**
by Dr. Bundit Sornpaisarn
Director of Major Risk Factors Control Section
- 14.30-15.00 **Health Promotion Expert Platform**
by Prof.Dr. Supa Pengpid
Director of ASEAN Institute for Health Development
- 15.00-15.30 **Closing Ceremony**
by Clin. Prof. Udom Kachintorn
President Mahidol University




Oral Presentation

24 August 2016



Room 1 Pathumwan, 2nd Floor

- 13.30-13.45 HP0002 **A LONG TIME PERSISTING EVIDENCE: THE TOBACCO MESSAGES EXPOSED IN FILM DURING 2008-2015**
Kirsten Y C Huang, Chi-hui Chung, Yi-Hua Chin and Shu-Ying Lo
Department of Radio, Television & Film, ShBermudezih Hsin University, Taiwan
- 13.45-14.00 HP0006 **KNOWLEDGE, ATTITUDE AND PRACTICE REGARDING ENVIRONMENTAL TOBACCO SMOKE AMONG PREGNANT WOMEN OF SUNSARI: A CROSS SECTIONAL STUDY**
Vijay Kumar Khanal and Dipesh Shyam Sundar
B.P.Koirala institute of Health Sciences, Dharan, Nepal
- 14.00-14.15 HP0007 **DECOLONIZING PUBLIC HEALTH: TRANSFORMING UNDERSTANDINGS AND OUTCOMES OF INDIGENOUS PEOPLES' HEALTH AND WELLBEING**
Renee JM Monchalin
Dalla Lana School of Public Health, University of Toronto, Canada
- 14.15-14.30 HP0008 **HEALTHY LIVING PRACTICES IN FAMILIES AND CHILD HEALTH IN TAIWAN: 5 YEARS FOLLOW-UP STUDY**
Yi-Ching Lin, Yi-Fan Li, Shu-Ti Chiou Chiou and Tung-liang Chiang
Institute of Health Behaviors and Community Sciences, National Taiwan University, Taiwan
- 14.30-14.45 HP0009 **SCREEN TIME, PHYSICAL ACTIVITY, AND OVERWEIGHT FOR CHILDREN: DO PARENTAL MODELING AND RESTRICTION MATTER?**
Yi-Ching Lin and Duan-Rung Chen
Institute of Health Behaviors and Community Sciences, National Taiwan University, Taiwan
- Refreshment (14.15-15.00)
- 14.45-15.00 HP0012 **ELIMINATION OF MALARIA - BANGLADESH PERSPECTIVE**
Mohammad Moktadir Kabir, Shamsun Naher, Nur-E-Naznin Ferdous and Md. Akramul Islam
Malaria Control Programme BRAC, Bangladesh
- 15.00-15.15 HP0013 **REVITALIZING THE EYE CARE UNITS OF GOVERNMENT DISTRICT HOSPITALS IN BANGLADESH**
Zara Khair
The Fred Hollows Foundation, Bangladesh
- 15.15-15.30 HP0014 **INTENSIFY THE TUBERCULOSIS CONTROL INTERVENTIONS AND IMPROVED TREATMENT OUTCOME THROUGH PATIENT CENTERED CARE: BRAC EXPERIENCE**
Shayla Islam, Masud Rana, Quazi Al Mamun Siddiqui, Md. Akramul Islam
TB Control Programme, BRAC, Bangladesh

- 
- 15.30-15.45 PH0005 **RISK FACTORS FOR KALA-AZAR IN EASTERN NEPAL**
Dharanidhar Baral, Sailesh Samyog, Nilambar Bhattarai and Uprety Jha
School of Public health and Community Medicine B. P. Koirala Institute Of Health Sciences
- 15.45-16.00 HP0037 **ASSOCIATION BETWEEN SECONDHAND SMOKE EXPOSURE AT HOME AND DISEASES RELATED TO SHS AMONG CHILDREN IN TAIWAN**
 Jian-Shiun Chiou, Shih-Chia Liu, Wen-Chiung Chang, Yu-Hsuan Lin, Baai-Shyun Hurng And Tung-Liang Chiang
Health Promotion Administration, Ministry of Health and Welfare, Taiwan
- 16.00-16.15 PH0002 **RISK OF HIV INFECTION AMONG THE SEASONAL LABOUR MIGRANTS OF MID TERAI REGION OF NEPAL**
Satya Narayan Yadav
Department of Public Health, National Academy for Medical Sciences, Kathmandu, Nepal
- 16.15-16.30 HP0095 **IMPACT EVALUATION OF A SCHOOL-BASED ORAL HEALTH PROMOTION PROGRAMME – AN EVIDENCE IN PUBLIC HEALTH PRACTICE**
Archana Sharda
Dept. of Public Health Dentistry, R R Dental College and Hospital, Umarda, Udaipur, Rajasthan, India
- 16.30-16.45 PH0050 **SURVIVAL FACTORS IN PATIENTS WITH END-STAGE RENAL DISEASE IN MAZANDARAN PROVINCE, IRAN**
B. Shabankhani, A. Kazemnejad and F. Zaeri
Biostatistics Dep. Mazandaran university of medical sciences, Sari, IRAN



Room 2 Phayathai, 2nd Floor

- 13.30-13.45 HP0016 **EFFECTIVENESS OF PEER EDUCATOR AS AN ALTERNATIVE EDUCATION OF REPRODUCTIVE HEALTH FOR ADOLESCENT**
Amelia Hidayah and Istigomah Nur Ocnisari
Faculty of Public Health/Nutrition, University of Indonesia, Indonesia
- 13.45-14.00 HP0018 **THE TAIWAN ADOLESCENT TO ADULT LONGITUDINAL STUDY (TAALS): AN INTRODUCTION OF METHODOLOGY AND FINDINGS**
Yu-Ning Chien, Ping-Ling Chen, Yi-Hua Chen, Hsiu-Ju Chang, Suh-Ching Yang, Yi Chun Chen, Shu-Ti Chiou and Hung-Yi Chiou
School of Public Health, College of Public Health and Nutrition, Taipei Medical University, Taiwan
- 14.00-14.15 HP0024 **KNOWLEDGE MANAGEMENT FOR GOOD PRACTICES IN DECREASING METABOLIC SYNDROME AND RISK FACTORS**
Bampen Phongphetdit
Boromaonanee Ratchaburi, Thailand
- 14.15-14.30 HP0049 **ISSUES ASSOCIATED WITH COMMUNICATING INFORMATION ON MATERNAL AND CHILD HEALTH AND CHILD-REARING IN A BRAZILIAN COMMUNITY IN JAPAN**
Mariko Sakamoto, Izumi Asano, Hidemi Hashimoto, Seiko Mizutani and Yuko Ohashi
Aichi Medical University, Japan
- 14.30-14.45 HP0025 **NEIGHBORHOOD DISADVANTAGE, SOCIOECONOMIC GRADIENTS AND ORAL HEALTH OF ADOLESCENTS: ADVOCATING FOR HEALTH PROMOTION THROUGH PROPORTIONATE UNIVERSALISM**
Manu Raj Mathur
Public Health Foundation of India, India
- Refreshment (14.15-15.00)
- 14.45-15.00 HP0030 **BARRIERS TO CALCIUM CONSUMPTION AMONG FEMALE LOWER SECONDARY STUDENTS IN NORTHEAST THAILAND**
Raksaworn Jaisaard, Tipaporn Kanjanarach and Tsutomu Kitajima
Faculty of Pharmaceutical Sciences, Khon Kaen University, Thailand
- 15.00-15.15 HP0034 **THE IMPACTS OF THE GLOBAL ECONOMIC RISK ON HOSPITALIZATIONS DUE TO AFFECTIVE DISORDERS IN TAIWAN**
Chih-Ming Lin and Chen-Mao Liao
Department of Healthcare Information and Management, Ming Chuan University, Taiwan
- 15.15-15.30 HP0035 **A STUDY ON QUALITY IMPROVEMENT OF THE BOWEL PREPARATION FOR COLONOSCOPY HEALTH SCREENING IN TAIWAN**
Ming Shu Chen and Yi-Horng Lai
Department of Health Care Administration, Oriental Institute of Technology, Taiwan



- 15.30-15.45 HP0040 **UNDERSTANDING INDIGENOUS TOBACCO CONTROL:
INFORMED BY A REALIST-REVIEW**
Maddox R, M Firestone, J Smylie and R Schwartz
*Well Living House, Centre for Research on Inner City Health, Li Ka
Shing Knowledge Institute, Canada*
- 15.45-16.00 HP0042 **FOOD SANITATION SURVEY OF MARKET FAIRS, PUBLIC
HEALTH AREA 7 , 8 (KALASIN, KHONKAEN, BUNG KARN,
ROI-ET, LOEI, NONG KHAI, NONG BUALAMPHU AND
UDONTHANI)**
Jariya Intraratsamee
Regional Health Promotion Centre 7 Knonkaen, Thailand
- 16.00-16.15 HP0136 **Socio-behavioral predictions of oral hygiene practices among
preschool children in Ratchaburi province, Thailand**
Thura Lin, Aroonsri Monkolchati, Orapin Laosee and Cheerawit
Rattanapan
*ASEAN Institute for Health Development, Mahidol University,
Thailand*



Room 3 Thiensin, 3rd Floor

- 13.30-13.45 HP0047 **FACTORS ASSOCIATED WITH NEWBORN SCREENING COMPLIANCE AMONG MOTHERS WHO HAVE GIVEN BIRTH IN LYING-IN CLINICS IN QUEZON CITY, PHILIPPINES**
Maylin C Palatino, Joshua M Ababan, Margaret Francine P CO, Elaine E Illescas, Jan Adrian S Montemayor and Jose Mario G Salazar
Department of Epidemiology and Biostatistics, University of the Philippines Manila, Philippines
- 13.45-14.00 HP0048 **EDUCATIONAL DIFFERENCES IN AWARENESS AND USE OF THE OUTPATIENT SMOKING CESSATION SERVICES PROGRAM IN TAIWAN**
Ying-Ting Wang, Hai-Yen Sung, and Shu-Ti Chiou
Institute of Health and Welfare Policy, National Yang-Ming University, Taiwan
- 14.00-14.15 HP0053 **UNDERSTANDING THE SOCIAL AND ECONOMIC FACTORS THAT INFLUENCE DEVELOPMENT OF CHILDHOOD OBESITY AMONG PRE-SCHOOLERS IN BANGKOK METROPOLITAN AREA**
Jomkwan Yothasamut, Laura Camfield and Michael Pfiel
Health Intervention and Technology Assessment Program, University of East Anglia, United Kingdom
- 14.15-14.30 HP0056 **THE EFFECT OF RESOURCES MANAGEMENT ON 1ST AND 2ND YEAR MEDICAL STUDENTS' ACADEMIC ACHIEVEMENTS AND THEIR LEVEL OF STRESS, ANXIETY AT HUE UNIVERSITY OF MEDICINE AND PHARMACY**
Truong Quy Quoc Bao, Tran Thanh Hong, Vo Thi Hue Man, Luong Thi Van Thao and Tran Vu Minh Thu
Faculty of Public health, Hue University of Pharmacy and medicine, Vietnam
- 14.30-14.45 HP0061 **OCCUPATIONAL EXPOSURES TO PATIENTS' BODY FLUIDS AMONG HEALTH CARE WORKERS IN A UNIVERSITY HOSPITAL IN ETHIOPIA**
Lindiwe I Zungu and Wondwossen D. Atlaw
Department of Health Studies, University of South Africa, South Africa
- 14.45-15.00 HP0072 **LANSKA MODEL THE MODEL OF LARVAL INDICES SURVEILLANCE SYSTEM FOR SUSTAINABLE DENGUE PROBLEM SOLUTION FROM HOUSEHOLDS TO DISTRICT LEVEL, SOUTHERN REGION, THAILAND**
Charuai Suwanbamrung, Chanchuri Thoutong, Thidarat Eksirinimit, Suda Jaihaw, Supapon Tongjan, Seamsug Ratanasuwan, Kanapot Thongkew
School of Allied Health Science and Public Health, Walailak University, Thailand

Refreshment (14.15-15.00)

- 
- 15.00-15.15 HP0079 **PERSUASIVENESS OF INDONESIAN NEW BALANCE NUTRITION MESSAGE: UNIVERSITY STUDENT PERCEPTION**
Yayi Suryo Prabandari, Bagas Suryo Bintoro, Afiatin Yaqutut Mukromah
Department of Health Behavior, Environmental and Social Medicine, Faculty of Medicine, Gadjah Mada University, Indonesia
- 15.15-15.30 HP0086 **PHYSICAL STATUS OF SCHOOL GOING CHILDREN AGED 5-15 YEARS IN MYANMAR: A PILOT STUDY**
Hiroko Yamashina, Midori Asano, Hisataka Sakakibara
Japan
- 15.30-15.45 HP0090 **ROLE OF LABORATORY PERFORMANCE IN PRIMARY HEALTH-CARE: A CASE STUDY OF OSMANABAD DISTRICT, MAHARASHTRA, INDIA**
Rahi Jain and Bakul Rao
Indian Institute of Technology Bombay, India
- 15.45-16.00 HP0130 **THE RELATIONSHIP BETWEEN ASTHMA AND OBESITY AMONG OLDER ADULTS IN THE COMMUNITIES OF THAILAND**
Patthanunt Yosaravuthvarakul, Jiraporn Chompikul, Aroonsri Mongkolchati and Khongdej Leethochawalit
Huayplau Hospital, Nakhonchaisri, Nakhonpthom province / ASEAN Institute for Health Development, Thailand
- 16.00-16.15 HP0070 **MOBILE PHONE USE AND THE RELATIONSHIP WITH SLEEP DISTURBANCES, DISTRESS AND LEARNING OUTCOMES AMONG STUDENTS AT HUE UNIVERSITY OF MEDICINE AND PHARMACY IN 2015**
Nhan Nguyen Phuc Thanh, Thanh Nguyen Vu, Tran Ton Nu Nam, Tam Nguyen Minh
Institute for Community Health Research, Hue UMP, Vietnam
- 16.15-16.30 HP0091 **DETERMINANT FACTORS AND THE CAUSED EFFECT OF HEAD LICE INFECTION AMONG PRIMARY SCHOOL STUDENTS IN TAMALANREA DISTRICT**
Itzar Chaidir Islam
Medical Faculty, Hasanuddin University, Makassar, Indonesia
- 16.30-16.45 HP0054 **AN EXPLORATION ON KNOWLEDGE AND BEHAVIOR ABOUT RABIES PREVENTION AND CONTROL: A COMMUNITY SURVEY IN MOUNTAINOUS DISTRICT OF VIETNAM**
Phu Trieu Phan, Thi Thu Nguyen, Anh Phuong Pham Thi, Thanh Tra Phan Thi and Quynh Nhu Nguyen
Faculty of Public Health, Hue University of Medicine and Pharmacy, Vietnam

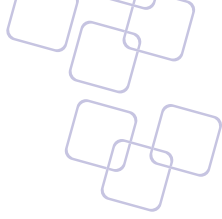


Room 4 Peking, 3rd Floor

- 13.30-13.45 HP0093 **IMPROVING ANTENATAL CARE FOR VULNERABLE WOMEN IN VIETNAM**
NGUYEN Huu Minh, TRAN Quy Long and TRAN Thi Hong
Institute for Family and Gender Studies, Vietnam
- 13.45-14.00 HP0094 **KNOWLEDGE, ATTITUDE AND PRACTICE FOR BREAST CANCER PREVENTION IN KHANH HOA PROVINCE, VIETNAM**
Nguyen Tu Nam Khanh Hoa
Vietnam
- 14.00-14.15 HP0097 **SOIL TRANSMITTED HELMINTHS (STH) INFECTION AMONG PRIMARY SCHOOL STUDENTS, AND THE EFFECTIVENESS OF STH ERADICATION POLICY OF PRIMARY HEALTH CARE IN BALIKPAPAN**
Bumi Zulheri Herman and Ranisa Handayani Ramlan
Public Health And Family Medicine, Hasanuddin University School of Medicine
- 14.15-14.30 HP0100 **TRAINING STATUS OF PUBLIC HEALTH SERVICE AMONG PRIMARY HEALTHCARE WORKERS IN RURAL CHINA**
Weirong Yan, Xingxin Zhan and Zhixia Zhang
Department of Epidemiology and Biostatistics, School of Public Health, Tongji Medical College, Huazhong University of Science and Technology, China
- 14.30-14.45 HP0101 **ACTIVE SOCIAL NETWORK MAY PREVENT DEPRESSION AMONG THE OLDEST THAI ELDERLY PERSONS AGED 80 YEARS AND ABOVE**
Myo Nyein Aung, Saiyud Moolphate Thin Nyein Nyein Aung, Chitima Katonyoo, Songyos Khamchai and Pongsak Wannakrairot
Faculty of Medicine, Chulalongkorn University, Bangkok, Thailand
- Refreshment (14.15-15.00)
- 14.45-15.00 HP105 **FIRST RE-DRINKING AMONG THAI ALCOHOL-DEPENDENT PATIENTS AFTER 1 YEAR HOSPITAL DISCHARGE**
Soontaree Srikosaj, Sirisak Thitidilokrat, Hathaichonnee Booncharean, Doungdean Chainoi, Apisak Wittayanookulluk, Napatsorn Rungsiwaroj, Lasita Srithammachart and Tipaporn Wonghongkul
Rajanagarindra Institute of Child Development, Department of Mental Health, Thailand
- 15.00-15.15 HP0106 **SEXUAL BEHAVIORS AND CONDOM USE OF STUDENTS IN THAILAND**
Vipa Danthamrongkul and Nipunporn Voramongkol
College of Public Health Science, Chulalongkorn University, Thailand



- 15.15-15.30 HP0107 **PREVALENCE OF PASSIVE DRINKING IN HONG KONG ADOLESCENTS**
Wu Yongda, Wang MP, Ruan RL, Ho SY, Leung LT, Huang R, Chen JJ, Lam TH
School of Nursing, University of Hong Kong, Hong Kong SAR
- 15.30-15.45 HP0059 **IS MOBILE-HEALTH FEASIBLE FOR HOME-BASED INTERVENTION FOR CHILDREN WITH AUTISM SPECTRUM DISORDER (ASD) IN LOW-RESOURCE SETTINGS?**
Hoa T. Hoang, Giang TH. Le, Hien T. Trinh, Linh H. Ho, Minh H. Tran, Ha S. Vu and Mai-Anh T. Nguyen
Center for Creative Initiatives in Health and Population, Vietnam




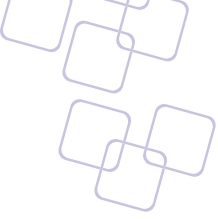
Oral Presentation

25 August 2016

Room 1 Pikulthong, 2nd Floor

- 8.30-8.45 DS0006 **VISUAL METHOD IN CAPTURING THE HEALTH DETERMINANTS**
Xinwee Chen and N.A. Hamid
Department of Community Medicine, Universiti Sains Malaysia
- 8.45-9.00 DS0009 **CHARACTERIZING THE RELATIONSHIP BETWEEN CLIMATIC FACTORS AND DENGUE FEVER IN THUA THIEN HUE PROVINCE, VIETNAM**
Truong Thi Thuy Dung, Nguyen Trong Nhan, Nguyen Van Hoa and Nguyen Thi Nam Lien
Public Health Faculty, Hue University of Medicine and Pharmacy, Viet Nam
- 9.00-9.15 DL0007 **DISTRICT HEALTH MANAGEMENT LEARNING STRATEGIES FOR IMPROVING DISTRICT HEALTH SYSTEM BY NONG KHAI LEARNING AND COORDINATING CENTRE**
Piromteera Kordjak
Nongkhai Provincial Health Office, Thailand
- 9.15-9.30 DL0008 **DISTRICT HEALTH MANAGEMENT : NETWORK POTENTIAL PARTNERS IN HEALTH THE PREVENTION AND CONTROL OF DENGUE FEVER BASED ON SUANPHUENG DISTRICT HEALTH SYSTEM, RATCHABURI PROVINCE**
Chattakorn Thanyakiat, Thararat Sunyamo and Boonnapa Songporn
Suanphueng Hospital, Ratchaburi , Thailand
- 9.30-9.45 HP0055 **PERCEIVED FACTORS AFFECTING NEW BORN SCREENING NON-COMPLIANCE AMONG MOTHERS WHO HAVE GIVEN BIRTH IN LYING-IN CLINICS IN AN URBAN CITY, PHILIPPINES**
Joshua M Ababan, Margaret Francine P CO, Elaine E Illescas, Jan Adrian S Montemayor., Jose Mario G Salazar and Maylin C Palatino
College of Public Health, University of the Philippines Manila, Philippines
- Refreshment (10.15-11.00)
- 9.45-10.00 PH0007 **THE ROLE OF SLEEP PROBLEMS IN THE RELATIONSHIP BETWEEN CUMULATIVE EXPOSURE TO PEER VICTIMIZATION AND ANTISOCIAL BEHAVIOR: A FIVE-YEAR LONGITUDINAL STUDY**
Ling-Yin CHANG, Chi-Chen WU, Linen Nymphas LIN, Lee-Lan YEN and Hsing-Yi CHANG
Institute of Population Health Sciences, National Health Research Institutes, Zhunan Town, Miaoli County, Taiwan
- 10.15-10.30 PH0011 **DEVELOPING A TRAINING PROGRAM FACTORS TO DEVELOP COMPETENCY OF REGIONAL OPERATING OFFICER IN THE VIRTUAL SERVICE PROVIDER OFFICE IN THAILAND**
Phongpisanu Boonda, Aree Preedeekul and Phataraphon Markmee
Sirindhorn College of Public Health, Phitsanulok, Praboromarajchanok institute of Health Workforce Development Ministry of Public Health, Thailand

- 
- 10.30-10.45 PH0012 **SURVEILLANCE FOR MIDDLE EAST RESPIRATORY SYNDROME AND INFLUENZA IN RETURNED TRAVELERS**
Angela Chow, Hanley Ho and Mar-Kyaw Win
Department of Clinical Epidemiology, Institute of Infectious Diseases and Epidemiology, Tan Tock Seng Hospital, Singapore
- 10.45-11.00 PH0013 **MONITORING THE UPS-AND-DOWNS OF ADULT DENGUE: A HOSPITAL-BASED DENGUE SURVEILLANCE PROGRAM**
Angela Chow, Adriana Tan, Hanley Ho and Mar-Kyaw Win
Department of Clinical Epidemiology, Institute of Infectious Diseases and Epidemiology, Tan Tock Seng Hospital, Singapore
- 11.00-11.15 PH0014 **MOLECULAR EPIDEMIOLOGY OF METHICILLIN-RESISTANT STAPHYLOCOCCUS AUREUS: DIFFERENCES BETWEEN HEALTHCARE FACILITIES AND ANATOMIC SITES**
Angela Chow, Jia-Wei Lim, Vanessa Lim and Pei-Yun Hon
Department of Clinical Epidemiology, Institute of Infectious Diseases and Epidemiology, Tan Tock Seng Hospital, Singapore
- 11.15-11.30 PH0015 **DIFFERENCES IN THE MOLECULAR EPIDEMIOLOGY OF VAN-COMYCIN-RESISTANT ENTEROCOCCUS AND RISK FACTORS FOR COLONIZATION BETWEEN HEALTHCARE FACILITIES**
Angela Chow, Jia-Wei Lim, Grace Tin and Pei-Yun Hon
Department of Clinical Epidemiology, Institute of Infectious Diseases and Epidemiology, Tan Tock Seng Hospital, Singapore



Room 2 Phayathai, 2nd Floor

- 8.30-8.45 IP0007 **SUSTAINED MOTIVATION TO STOP SMOKING IN A SMOKING CESSATION TRIAL; LESSON FROM THE ESCAPE TRIAL THAILAND**
Myo Nyein Aung, Motoyuki Yuasa, Saiyud Moolphate, Hiroshi Fukuda, Tsutomu Kitajima, Thaworn Lorga, Hirohide Yokokawa, Kazuo Minematsu, Susumu Tanimura, Yoshimune Hiratsuka, Koichi Ono, Sachio Kawai, Yaoyanee Suya, Somboon Chumvicharana and Eiji Marui
WHO collaborating center for medical education, Faculty of Medicine, Chulalongkorn University, Thailand
- 8.45-9.00 AL0001 **EMPOWERING AND MOBILIZING THE YOUTH FOR BIRTH DEFECTS AND PREMATURITY AWARENESS AND PREVENTION IN THE PHILIPPINES**
Ryan John Palustre Pascual, Christian Emmanuel Enriquez, Aster Lynn Carmencita and Sur Padilla
Volunteer Youth Leaders for Health - Philippines, IHG-NIH, University of the Philippines, Philippines
- 9.00-9.15 AL0005 **THE HOMELESS CAPACITY BUILDING PROJECT: WORKING MODEL AND LESSONS LEARNED**
Sakol Sopitarchasak, Nopphan Promsri, Anusorn Amphansri and Anuk Pitakthanin
Thai Health Promotion Foundation, Thailand
- 9.15-9.30 AL0006 **TRANS-DISCIPLINARY RESEARCH COLLABORATION AND PARTICIPATORY PUBLIC POLICY DEVELOPMENT: EXPERIENCES FROM THE LAKE HEAD PROJECT**
Amiel Nazer Bermudez, Jaime Z Gary T, Leah A Palapar, Allan Chester B Nadate, Nikolas Leandro R Daguno and Galvez Tan Pagtiilan
Department of Epidemiology and BiostaBsBcs, College of Public Health University of the Philippines Manila, Philippines
- 9.30-9.45 AL0007 **WORK ABILITY INDEX (WBI) AS INDICATOR FOR SUSTAINABLE OF OCCUPATIONAL HEALTH PERFORMANCE AMONG SMALL AND MEDIUM ENTERPRISE (SME) WORKER IN INDONESIA**
Indri Hapsari Susilowati and Lassie Fitria
Occupational Health and Safety, University of Indonesia, Indonesia
- 9.45-10.00 AL0009 **THE RESEARCH ON ECONOMIC BURDEN OF SCHIZOPHRENIA DISEASE IN THE HOUSEHOLDS WITH THE PATIENTS IN HUE CITY**
Lan Nguyen and Nhat Quang Nguyen Duc
Faculty of Public Health, Hue university of Medicine and Pharmacy, Vietnam

- 
- 10.00-10.15 AL0012 **CERTIFIED PSYCHIATRIC PHARMACISTS ROLE IN COMMUNITY PSYCHIATRIC PATIENTS CARE: A SURVEY STUDY**
Paruethai Kesorn, Puckwipa Suwannaprom, Wirat Niwatananun, Suphanikar Kijwasasphiboon and Aphawan Phlaichum
Suanprung Psychiatric Hospital, Chaingmai, Thailand
- Refreshment (10.15-11.00)
- 10.15-10.30 DL0004 **PERCEPTIONS AND EXPERIENCES OF HEALTH PERSONNEL AND NETWORKS OF HEALTH COLLABORATORS PARTICIPATED IN THE DISTRICT HEALTH MANAGEMENT LEARNING PROJECT: A CASE STUDY OF KALASIN PROVINCE, THAILAND**
Phitthaya Srimuang, Apinya Thammaseang and Prapaporn Papirom
Sirindhorn College of Public Health Khonkaen, Thailand
- 10.30-10.45 HP0110 **EFFECT OF FACIAL REMODELING BY BOTULINUM TOXIN ON SELF-ESTEEM – A PILOT STUDY**
Cholticha Kanuwatana, Panlop Chakkavittumrong and Pichit Suvanprakorn
Division of Dermatology, Chulabhorn International College of Medicine Thammasat University, Thailand
- 10.45-11.00 HP0121 **FACTORS AFFECTING SEXUAL INTERCOURSE INTENTION AMONG YOUNG UNMARRIED MEN IN INDONESIA: AN ANALYSIS OF THE 2012 INDONESIAN**
Mohammad Ainul Maruf
Institute for Population and Social Research (IPSR), Mahidol University, Thailand
- 11.00-11.15 HP0122 **FORCED DRINKING IN HONG KONG ADOLESCENTS**
Lok Tung LEUNG, Sai Yin HO, Yong Da WU, Ruo Lin RUAN, Man Ping WANG, Jian Jiu CHEN, Rong HUANG and Tai Hing LAM
School of Public Health, The University of Hong Kong, Hong Kong SAR, China
- 11.15-11.30 HP0134 **ORAL HEALTH LITERACY AMONGS CAREGIVERS OF CHILDREN AGED 0-3 YEARS OLD, RATCHABURI, THAILAND**
 Itsaranuwat Yongpisanphop, Jiraporn Chompikul, Boonyong Keiwkarnka and Jutatip Sillabutra
Dental Health Department, Watphleng Hospital, Ratchaburi / ASEAN Institute for Health Development, Thailand
- 11.30-11.45 HP0135 **FUNCTION DISABILITY AND QUALITY OF LIFE IN ELDER AGED 50 YEARS AND OVER IN BANPHO DISTRICT, NAKHONNAYOK PROVINCE, THAILAND**
 Sirinapa Siriporn Na Ratchaseema, Aroonsri Mongkolcharti and Orapin Lao see
ASEAN Institute of Health Development, Mahidol University, Thailand



Room 3 Theinsin, 3rd Floor


- 8.30-8.45 PH0021 **IMPACT OF SMOKE-FREE LEGISLATION ON CHILDREN'S DOMESTIC EXPOSURE TO ENVIRONMENTAL TOBACCO SMOKE**
Ying-Ting Wang, Yi-Wen Tsai, Tzu-I Tsai and Po-Yin Chang
Institute of Health and Welfare Policy, National Yang-Ming University, Taiwan
- 8.45-9.00 PH0028 **COMPARATIVE TRENDS IN THE INCIDENCE OF TUBERCULOSIS IN COUNTRIES THE ASEAN REGION, 1990 TO 2014**
Carl Abelardo Trinidad Antonio
Department of Health Policy and Administration College of Public Health, University of the Philippines Manila
- 9.00-9.15 PH0030 **INHIBITORY ACTIVITY AGAINST PATHOGENIC BACTERIA OF STREPTOMYCETES ISOLATED FROM THAI NATURAL RESOURCES**
Manee Chanama, Suchart Chanama and Nongnat Thongkrachang
Department of Microbiology, Faculty of Public Health, Mahidol University
- 9.15-9.30 PH0039 **DECISION MAKING PATTERNS AND FACTORS EFFECTING TO EMERGENCY MEDICAL SERVICES IN 10TH HEALTH SERVICE AREA, THAILAND**
Thongsakchai Saipraraj, Kridsana Wuttisin and Woragon Wichaiyo
Faculty of Public Health, Kalasin University, Thailand
- Refreshment (10.15-11.00)
- 9.30-9.45 PH0024 **KNOWLEDGE AND PREVENTIVE BEHAVIOR OF HAND FOOT AND MOUTH DISEASES AMONG KINDERGARTEN TEACHERS IN THE PRIMARY SCHOOLS IN UBONRATCHATANI PROVINCE**
Wararat Sangwalee, Supaporn Promkul and Suwanee Chinnawong
Division of Gradated, Faculty of Medicine
- 9.45-10.00 PH0025 **SPATIAL PATTERNS AND TRENDS OF MATERNAL MORTALITY IN NEPAL**
Manju Maharjan
Nepal
- 10.00-10.15 PH0041 **NEIGHBORHOOD DISADVANTAGE AND ORAL HEALTH: IMPACT OF AREA OF RESIDENCE ON ORAL HEALTH, HYGIENE AND ACCESS TO ORAL**
Hemant Mathur and Saurabh Goel
Pacific Dental College and Hospital, India

- 
- 10.15-10.30 PH0042 **FACTORS AFFECTING THE USAGE OF HEALTH INSURANCE OF RURAL PATIENTS AT PUBLIC HEALTH FACILITIES IN VIETNAM**
Dang Nguyen Anh, Nguyen Duc Vinh and Nghiem Thi Thuy
Institute of Sociology, Vietnam Academy of Social Sciences, Vietnam
- 10.30-10.45 PH0032 **FIRST RECORD OF PATHOGENIC LEPTOSPIRA SPP DETECTED IN BAT IN UPLB CAMPUS, PHILIPPINES USING FLAB PCR**
Ruth Joy - L Relador, Nina G Gloriani and Phillip – A Alviola
College of Public Health and College of Medicine, University of the Philippines Manila, Philippines
- 10.45-11.00 PH0047 **FEMALE SEX WORKERS IN BA RIA–VUNG TAU, VIETNAM: SOCIO-DEMOGRAPHIC PROFILE AND HEALTH RISK BEHAVIOURS**
Nguyen T, Stewart D, Lee P and Dang T. N. H
School of Medicine, Griffith Univers, Australia
- 11.00-11.15 PH0051 **FIRST CONTACT HEALTH FACILITY TO REACH TREATMENT AMONG NEW PULMONARY TB PATIENTS IN MANDALAY DISTRICT, MYANMAR**
Phyu Phyu Thin, Orapin Laosee and Aroonsri Mongkolchati
ASEAN Institute for Health Development, Mahidol University, Thailand
- 11.15-11.30 HP0138 **FACTORS AFFECTING UTILIZATION OF QUALITY ANTENATAL CARE SERVICES AMONG MYANMAR MIGRANT IN THAI COMMUNITIES: TAK AND SAMUT SAKHON**
Lin Zaw Myo, Sariyamon Tiraphat and Nate Hongkraileert
ASEAN Institute for Health Development, Mahidol University, Thailand
- 11.45-12.00 DL0010 **THE SOCIAL CAPITAL OF UCARE: KEY FINDINGS FOR CHALLENGING OF DISTRICT HEALTH SYSTEM MANAGEMENT LEARNING.**
Boonsurb Sosome
Boromarajonani College of Nursing Praputhabat, Saraburi Province, Thailand.
- 12.00-12.15 DL0011 **DEVELOPING KNOWLEDGE SHARING IN HOME HEALTH CARE SERVICES OF PRIMARY CARE PROVIDERS IN SOUTHERN THAILAND**
Ekarat Chanwanpen, Arak Wongworachat
Sichon Hospital, Sichon district, Nakhonsithammarat province
- 12.15-12.30 PH0045 **THE FEASIBILITY STUDY ON MOBILE PHONE APPLIED IN SYNDROMIC SURVEILLANCE AND EARLY WARNING SYSTEM IN YUNNAN, CHINA __YINGJIANG COUNTY AS THE EXAMPLE**
Mingyue WANG and Wei LIU
Institute for Health and Development Studies, School of Public Health, Kunming Medical University, China



Room 4 Peking, 3rd Floor


- 8.30-8.45 PH0026 **THE REALITY DIET AND OTHER REALAED-FACTORS IMPACT THE TREATMENT RESULT OF TYPE II OUTPATIENT DIABETES IN THAI NGUYEN**
Nguyen Thi Thanh Tam and Tran Thi Huyen Trang
Nutrition and food safety department, Public health Faculty, Thai Nguyen university of Medicine and Pharmacy.
- 8.45-9.00 IP0009 **PROMOTING EARLY IDENTIFICATION OF AUTISM SPECTRUM DISORDER (ASD) THROUGH M-HEALTH APPLICATION AND INTEGRATING SCREENING AT HEALTH CHECK UPS**
Hien T Trinh
Centre for Creative Initiatives in Health and Population, Vietnam
- 9.00-9.15 PH0018 **SEXUAL PARTNER SEEKING ROUTES AND PREFERENCES AMONG MEN WHO HAVE SEX WITH MEN IN BANGKOK, THAILAND**
Jirayu Visuthranukul, Phenphop Phansuea and Wiroj Jiamjarasrangsi
Department of Preventive and Social Medicine, Faculty of Medicine, Chulalongkorn University, Thailand
- 9.15-9.30 PH0020 **ALCOHOL USE DISORDER, COMORBIDITY AND TUBERCULOSIS MEDICATION NON-ADHERENCE AMONG TB PATIENTS IN SI SA KET PROVINCE NORTHEASTERN THAILAND**
Samai Laprawat, Wirat Pansila, Karl Peltzer and Chalermopol Tansakul
Faculty of Public Health, Maha Sarakham University
- 9.30-9.45 HP0125 **FACTORS AFFECTING THE USAGE OF PERSONAL PROTECTIVE EQUIPMENT (PPE) AMONG MYANMAR MIGRANT SEA-FOOD PROCESSING FACTORY WORKERS IN SAMUT SAKHON PROVINCE, THAILAND**
Thit Lwin, Nate Hongkraitert and Sariyamon Tirapat
ASEAN Institute for Health Development, Mahidol University, Thailand
- Refreshment (10.15-11.00)
- 9.45-10.00 HP0078 **RISK ANALYSIS : DETERMINANT OF HEALTH PREVENTION, PROMOTION AND PROTECTION PROGRAMS IN THE WORK-PLACE (A CASE STUDY IN FABRICATION WORKSHOP PT.X,IN-DONESIA)**
Sri Indra Krunia, Eka senja Koesdianasari and Rarahayu Crabdaditya
Department of Public health-Occupational Health and Safety, Univiersitas Airlangga, Indonesia

- 
- 10.00-10.15 HP0127 **FACTORS PROMOTING CONTINUATION OF BREASTFEEDING AMONG CHILDREN AGED \leq 2 YEARS IN RURAL BANGLADESH**
Shohana Alam, Aroonsri Mongkolchati, Cheerawit Rattanapan and Orapin Laosee
ASEAN Institute for Health Development, Mahidol University, Thailand
- 10.15-10.30 HP0129 **DETERMINANTS OF HOME PHYSICAL PUNISHMENT ON CHILDREN AGED 1 TO 14 YEARS IN VIETNAM**
Duong Thuy Nguyen, Cheerawit Rattanapan, Aroonsri Mongkolchati and Orapin Laosee
ASEAN Institute for Health Development, Mahidol University, Thailand
- 10.30-10.45 HP0131 **FACTORS ASSOCIATED WITH DEPRESSION AMONG OLDER AGE OVER 49 YEARS OLD IN THAILAND**
Tanakorn Saranyapinyo, Aroonsri Mongkolchati and Orapin Laosee
Wihandaeng hospital, Saraburi / ASEAN Institute for Health Development, Mahidol University, Thailand
- 10.45-11.00 HP0132 **PERFORMANCES OF PROACTIVE COMMUNITY-BASED DIABETES SCREENING WITH QUESTIONNAIRE, RANDOM CAPILLARY BLOOD GLUCOSE TEST AND HBA1C TEST AT BANTHAEN DISTRICT IN CHAIYAPHUM PROVINCE OF THAILAND**
Dusit Khamchaiyaphum, Supa Pengpid and Jiraporn Chompikul
Chaiyaphum Provincial Health Office, Ministry of Public Health/ ASEAN Institute for Health Development, Mahidol University, Thailand
- 11.00-11.15 HP0133 **INSOMNIA ASSOCIATED FACTORS AND INSOMNIA SELF-MANAGEMENT AMONG THE OLDER ADULTS IN THAILAND**
Dacha Pongsupan, Aroonsri Mongkolchati and Orapin Laosee
ASEAN Institute for Health Development, Mahidol University, Thailand
- 11.15-11.30 HP0137 **FACTORS ASSOCIATED WITH MEDICATION ADHERENCE AMONG TYPE 2 DIABETES PATIENTS IN YANGON, MYANMAR: QUANTITATIVE STUDY**
Wai Yan Maung Maung, Sariyamon Tirapat and Apa Puckpinyo
ASEAN Institute for Health Development, Mahidol University, Thailand



Poster Presentation

24 August 2016
Room: Pikulthong, 2nd Floor, 10.00-15.00

- 
- PH0003 **NUTRITIONAL STATUS OF UNDER FIVE CHILDREN OF MUSHAHAR COMMUNITY OF SUNSARI DISTRICT OF NEPAL**
Anup Ghimire Birendra Kumar Yadav, Rajan Bikram Rayamajhi, and Paras Kumar Pokhare Pokharel
School of Public Health and Community Medicine B. P. Koirala Institute Of Health Sciences, Nepal
- PH0004 **STUDY OF PERCEPTION REGARDING SWINE FLU AMONG SCHOOL TEACHER OF EASTERN TERAI REGION OF NEPAL**
Samyog Uprety, Anup Ghimire Birendra Masum Poudel and Nilambar Jha
School of Public health and Community Medicine B. P. Koirala Institute Of Health Sciences, Nepal
- PH0026 **THE REALITY DIET AND OTHER REALAED-FACTORS IMPACT THE TREATMENT RESULT OF TYPE II OUTPATIENT DIABETES IN THAI NGUYEN**
Nguyen Thi Thanh Tam and Tran Thi Huyen Trang
Nutrition and food safety department, Public health Faculty, Thai Nguyen university of Medicine and Pharmacy, Vietnam
- PH0038 **TIME SERIES ANALYSIS OF THE EFFECT OF CLIMATE, METEOROLOGY AND AIR POLLUTION ON LONDON AMBULANCE CALL-OUT RATES**
Sangkharat K., Pope F.D, Thornes J.E.
School of Geography, Earth and Environmental Sciences, University of Birmingham, Edgbaston, Birmingham, United Kingdom
- PH0040 **THE NEGOTIATION PRACTICE OF USING CONDOMS AND VAGINAL DOUCHING TO THE FEMALE SEX WORKER IN SUKA DAMAI LOA HUI LOCALIZATION OF SAMARINDA CITY (QUALITATIVE STUDY ON FEMALE SEX WORKER)**
Lisa Wahidatul Oktaviani, Rahmi Susanti and Erni Wingki Susanti
Institute Health of Science of Muhammadiyah Samarinda, Indonesia
- PH0044 **COST OF HANDLING BIOMEDICAL WASTE: A PILOT STUDY IN A TERTIARY CARE HOSPITAL IN NORTH INDIA**
Ashok Kumar, Vipin Koushal, Anil Gupta, Kiran Dvr, Navin Pandey, Milan Bagla
Department of Hospital Administration, PGIMER, India
- HP0044 **ENVIRONMENTAL TEMPERATURE AND BLOOD PRESSURE AMONG ADULTS: A SYSTEMATIC REVIEW AND META ANALYSIS**
Qiong WANG, Changchang LI and Cunrui HUANG
School of Public Health, Sun Yat-sen University , Chaina
- HP0050 **PERCEIVED MOBILITY AS PREDICTOR OF SEDENTARY AND WALKING TIME IN A HEALTHY ELDERLY POPULATION IN TAIWAN**
Susan C Hu, Wan-Chi Ida Wu and Tzu-Mei Weng
Department of Public Health, College of Medicine, National Cheng Kung University
- HP0052 **SOCIAL ENVIRONMENTS AND SOCIAL PARTICIPATION OF OLDER ADULTS IN TAIWAN**
Susan C. Hu, Nuan-Ching Huang and Wan-Yi Lin
Department of Public Health, College of Medicine, National Cheng Kung University, Taiwan

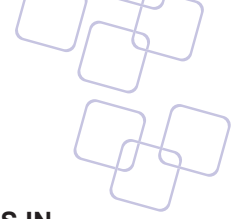


- HP0084 **MULTI-ATTRIBUTE DECISION MODELS FOR ADOPTING IN RISK PLAY OF ELDERLY AND DISABLED HEALTHCARE SYSTEM**
Boonyong Punantapong
Department of Industrial Physics and Medical Instrumentation, Faculty of Applied Science, King Mongkut's University of Technology North Bangkok, Thailand
- PT0001 **DEA BUILD AND FIGURE OF UNIVERSITY STUDENT IN JAPAN AND THAILAND**
Naohito KAWASAKI and Fumihiko OGATA
Department of Pharmacy, Kindai University, Japan
- PT0004 **EVALUATION THE EFFECTIVENESS OF INFLUENZA VACCINATIONS FOR ELDERLY PATIENTS WITH ENDSTAGE RENAL DISEASE IN TAIWAN - A POPULATION-BASED STUDY**
Yu-Chia Chang, Shang-Wei Hsu, Ho-Jui Tung, Te-Feng Yeh and Yu-Ju Lin
Asia University, Taiwan
- PT0005 **USE OF SEASONAL INFLUENZA VACCINATION AND ITS ASSOCIATED FACTORS AMONG ELDERLY PEOPLE WITH DISABILITIES IN TAIWAN: A POPULATION-BASED STUDY**
Yu-Chia Chang, Ho-Jui Tung, Shang-Wei Hsu, and Wen-Chen Tsai
Asia University, Taiwan
- PT0007 **THE RELATIONSHIP BETWEEN SOCIAL PARTICIPATION AND EQ-5D SCORES FOR THE ELDERLY IN TAIWAN**
Susan C. Hu, Nuan-Ching Huang and Pin-Han Guo
National Cheng Kung University, Taiwan
- PT0008 **THE ASSOCIATION BETWEEN THE TYPES AND FREQUENCY OF SOCIAL CONNECTION AND DEPRESSION AMONG THE OLDER POPULATION IN TAIWAN**
Susan C. Hu, Nuan-Ching Huang and Chang-Chih Wang
National Cheng Kung University, Taiwan
- PT0009 **STUDY ON IMPROVEMENT IN HEALTH LITERACY OF ELDERLY PEOPLE LIVING ALONE VIA REGIONAL VOLUNTEER ACTIVITIES BY STUDENTS**
Izumi Matsuo, Yosiko Sasamori and Mituko Hosokawa
Aomori University of Health and Welfare, Japan
- PT0010 **AN EXPLORATION OF KNOWLEDGE, ATTITUDES AND BEHAVIOURS (KAB) TOWARDS PRE-MARITAL SEX: A STUDY AMONG YOUTHS WHO LIVING IN RENTED-ROOMS IN HUE CITY**
Phu Trieu Phan and Thanh Nhan Phan Thi
Faculty of Public Health, Hue University of Medicine and Pharmacy, Vietnam
- PT 0012 **EVALUATION THE EFFECTIVENESS OF PERIODIC HEALTH EXAMINATION AMONG ELDERLY IN TAIWAN - A REPRESENTATIVE POPULATION-BASED STUDY**
Yu-Chia Chang, Chi-Jung Chiang, Ho-Jui Tung, Shang-Wei Hsu
Department of Healthcare Administration, Asia University, Taichung, Taiwan
- PT 0014 **BODY MASS INDEX, DEMOGRAPHICS, AND HEALTH CONDITIONS OF OLDER JAPANESE**
Yumiko ISHIKAWA, Yukie KAMIYAMA, Shoko KANEKO, Akemi MARUI, and Noriko AIZAWA
Dokkyo Medical University, Japan

- 
- PT0015 **UTILIZING PLAN-DO-CHECK-ACTION METHODS FOR REDUCING OF NURSE NEEDLE STICK INJURIES**
Yu-Ju Lin, Fu-Mei Huang and Chiu-Hsiang Lee
Department of Nursing, Chung Shan Medical University Hospital / School of Nursing, Chung Shan Medical University, Taichung, Taiwan
- PT0016 **APPLICATION OF ROOT CAUSE ANALYSIS TO IMPROVE THE SAFETY FOR HIGH ALERT MEDICINE**
Yu-Ju Lin, Hsueh-Ya Tsai, Chiu-Hsiang Lee
Department of Nursing, Chung Shan Medical University Hospital / School of Nursing, Chung Shan Medical University, Taichung, Taiwan
- PT0017 **THE HONEY FUSE ALONE VERA JELL GAUZE ABILITIES HEAL A WOUND PREVENTING OF GAUZE ATTACH TO THE BRUISE**
Wisitpholn Thepmaneerat
Primary care unit of Ban-Naiphong /Branch of public health/ Mahachakkri Sirindron of public health Trang, Thailand
- PT0018 **THAI MASSAGE SLIPPER REDUCE FOR FOOT NEUROPATHY IN THE DIABETIC TYPE II PATIENT**
Kawinnart Ponlawat and Wisitpholn Thepmaneerat
Primary care unit of Ban-Naiphong /Branch of public health/ Mahachakkri Sirindron of public health Trang, Thailand
- PT0019 **THE STUDY OF RESULT SCREENING CHILD DEVELOPMENT SKILL WITH COMPARISON BETWEEN PROACTIVE AND REACTIVE OF CAREGIVERS RAISING CHILD IN SERVICE AREA BAN-NONGKLAR OF TAMBON HEALTH PROMOTING HOSPITAL , KAOWISET SUB-DISTRICT, WANGWISET DISTRICT, TRANG PROVINCE**
Yuttapong KornChatrri and WisitpholnThepmaneerat
Ban-Nongklar of Tambon health promoting hospital, Branch of public health, MahachakkriSirindron of public health Trang, Thailand
- PT0020 **THE DEVELOP OF INTEGRATED VECTORS MANAGEMENT (IVM) APPLY REMOVAL CARRIER ON THE RESPONSIBLE AREA PRIMARY CARE UNIT OF BAN-NAIPHONG**
Siraporn Keawpracham and Wisitpholn Thepmaneerat
Primary care unit of Ban-Naiphong /Branch of public health/ Mahachakkri Sirindron of public health Trang
- PT0021 **THE INVESTIGATION OF THE EPIDEMIC OF SCABIES IN GROUND SECURITY AIR FORCE CROPS, WING 56 SONGKLA PROVINCE**
CDR.Coonphirot and Wisitpholn Thepmaneerat
Primary care unit of Ban-Naiphong /Branch of public health/ Mahachakkri Sirindron of public health Trang
- PT0024 **SURVEY ON NURSING TEACHERS' EXPERIENCE OF COUNSELLING IN REGARD TO CYBERBULLYING AMONG JUNIOR HIGH AND SENIOR HIGH SCHOOL STUDENTS**
Ryohei Terao and Noriya Kaneko
Nagoya City University, Japan



- PT0025 **DROWNING SURVEILLANCE SYSTEM AND PREVENTION PROGRAM NEEDS FOR NATURAL DISASTER IN CAMBODIA**
Seohyun Bae
Department of Nursing, PyeongTark University, Korea
- PT0026 **UGIH SCORE 2014**
Rangson Chaikitamnuaychok and Prof. Jayanton Patumanond
Kamphaengphet Hospital, Thailand
- PT0027 **ECOLOGICAL ASSOCIATION BETWEEN AGE ACTIVE SOCIAL ENVIRONMENT AND DEPRESSION PREVALENCE AMONG OLDER ADULTS IN TAIWAN: A NATIONWIDE STUDY BASED ON NATIONAL HEALTH INSURANCE RESEARCH DATABASE**
Tzu-Mei Weng, Chiachi Bonnie Lee, Chung-Yi Li and Susan C. Hu
National Cheng Kung University, Taiwan
- PT0028 **PERCEIVED MOBILITY AS PREDICTOR OF SEDENTARY AND WALKING TIME IN A HEALTHY ELDERLY**
Wan-Chi Ida, Tzu-Mei Weng and Susan C. Hu
National Cheng Kung University, Taiwan
- PT0029 **EFFECT OF LAUGHTER YOGA ON SALIVARY CORTISOL: RANDOMIZED CONTROLLED TRIAL**
Atsuhiko Ota, Akiko Fujisawa and Hiroshi Yatsuya
Fujita Health University School of Medicine, Japan
- PT0031 **AN INNOVATIVE METHOD BASED ON THE INTEGRATION OF THE COMPUTER-BASED CONCEPT MAPPING AND COLLABORATIVE TECHNIQUES AND COGNITIVE STYLES TO IMPROVE LEARNING MOTIVATION**
Chei-Chang Chiou and Yu-Min Wang
National Changhua University of Education, Taiwan
- PT0033 **EVALUATION OF THE STAFF SICKNESS SURVEILLANCE SYSTEM IN AN ACUTE CARE GENERAL HOSPITAL IN SINGAPORE**
Hanley J Ho, Win K Chen, Poh L Lim and Angela Chow
Clinical Epidemiology , Tan Tock Seng Hospital, Singapore
- PT0034 **A COMMUNITY PARTNERED INFLUENZA AND PNEUMOCOCCAL VACCINATION PROGRAMME FOR SENIORS IN SINGAPORE**
Hanley J Ho, Win K Chen, Yin Y Chan and Christina Wong
Clinical Epidemiology , Tan Tock Seng Hospital, Singapore
- PT0035 **IMPROVING THE KNOWLEDGE AND ATTITUDES OF COMMUNITY DWELLING SENIORS TOWARDS INFLUENZA, PNEUMONIA AND VACCINATION THROUGH SMALL GROUP EDUCATIONAL SESSIONS**
Hanley J Ho, Win K Chen, Yin Y Chan and Christina Wong
Clinical Epidemiology , Tan Tock Seng Hospital, Singapore



- PT0036 **FACTORS INFLUENCING KNOWLEDGE AND ATTITUDES TOWARDS INFLUENZA AND PNEUMONIA AMONG COMMUNITY DWELLING SENIORS IN SINGAPORE**
Hanley J Ho, Win K Chen, Yin Y Chan and Christina Wong
Clinical Epidemiology , Tan Tock Seng Hospital, Singapore
- PT0037 **THE OPERATIONS OF ALCOHOLICS RECOVERY BY ALCOHOLICS ANONYMOUS: AA IN HEALTH CARE SERVICE SYSTEM IN THAILAND 2009-2012**
Juthamas Euasirattanapaisan and Piyakorn Chutangkorn
Stop Drink network Thailand, Thai Health Promotion Foundation (Thai Health), Thailand
- PT0038 **PREVALENCE AND NEEDS OF ACCESSING TO COMMUNITY BASED REHABILITATION STRATEGY AMONG THE CHILDREN WITH DISABILITIES IN HUE CITY, VIETNAM : A QUALITATIVE AND QUANLITATIVE STUDY**
Nguyen Thi Xuan Duyen, Nguyen Thi Tuyet Mai, Tran Minh Hieu, Cao Xuan Hoang, Phung Thi Bao Chau, Hoang Dinh Tuyen and Ha Chan Nhan
Phu Yen Center for Preventive Medicine, Vietnam



National Conference Program

1st District Health Management Learning : DHML



24 August 2016

Opening ceremony & Keynote Speech Venue: Ratchatevee Grand Ballroom, 3rd Floor

08.00 – 09.00 Registration

09.00 - 09.30 ***Opening ceremony***

Welcoming remarks: Prof. Dr.Supa Pengpid, Director of AIHD

Opening Remarks: WFPHA

Congratulatory remarks: Dr. Thawat Suntrajarn, Vice Minister of Public Health & President of The National Health Association of Thailand

09.30-10.00 ***Keynote Speech I: Sustainable Development Goals and Public Health***

By Dr Daniel Kertesz, WHO Representative to Thailand

10.00-10.30 ***Keynote Speech II: Role of WFPHA plan for Sustainable Development Goals (SDGs)***

by Prof Bettina Borisch

10.30-10.45 Refreshment

10.30-11.00 **Opening Ceremony of The 1st District Health Management**

Learning Conference

MC : Dr.Sirideth Chaireonchai and Ms Channipa Pethra

Short film “**What is District Health School (Rong Rian)?**”

11.00-12.00 **“Transformative Education : Working an learning to transform”**

Keynote Speaker : Professor Dr. Vicharn Panich

12.00-13.00 Lunch

13.00-14.00 Posters ROUND / Exhibition

14.00-16.30 Room 1 Northern Region Life Long Learning : self-development and growth

Venue: Prakaipaeth, 2nd Floor

Room 2 Good assets in Central Region

Venue: Kingthong, 2nd Floor

Room 3 North Eastern Region Community Health and Economy

Venue: Ratchatevee I, 3rd Floor

Room 4 Southern Region Outside Public Health Arena: networking and collaboration

Venue: Ratchatevee II, 3rd Floor



25 August 2016

08.00 – 09.00 Registration

09.00 - 12.00 **Soft skill Workshop 1 Listening more than listening**

Facilitators Chulada Sukumanrawan

Venue: Prakaipaeth, 2nd Floor

Soft skill workshop 2 Transforming Inside Out

Facilitators

Assoc.Prof. Surakiat Archananuphab

Dr. Yongyut Pongsuprap

Mr. Nares Songkhorsuk

Dr.Tara Rattanoamnouysiri

Mr.Ta Maiwong (VHV)

Venue: Kingthong, 2nd Floor

Soft skill workshop 3 Check-in /body paints/ PILA Techniques

Facilitators

Dr.Jarun Singhkeow

Lect. Sompong Leekhor

Lect. Jintana Somphong

Lect.Sathon Sompong

Venue: Ratchatevee II, 3rd Floor

Panel discussion “ The 21st century / transformative learning through action

Panel list

Dr.Siranee Srihaphage

Dr.Aroonsri Mongkolchati

Prof.Dr. Vanicha Chuenkongkaew

Venue: Ratchatevee I, 3rd Floor

12.00-13.00 Lunch

13.00-14.30 Rapport by representatives from 4 regions

MC: Dr.Sirideth Charoenchai and Ms.Channipa Phaethra

Closing ceremony

Venue: Ratchatevee Grand Balloom, 3rd Floor